

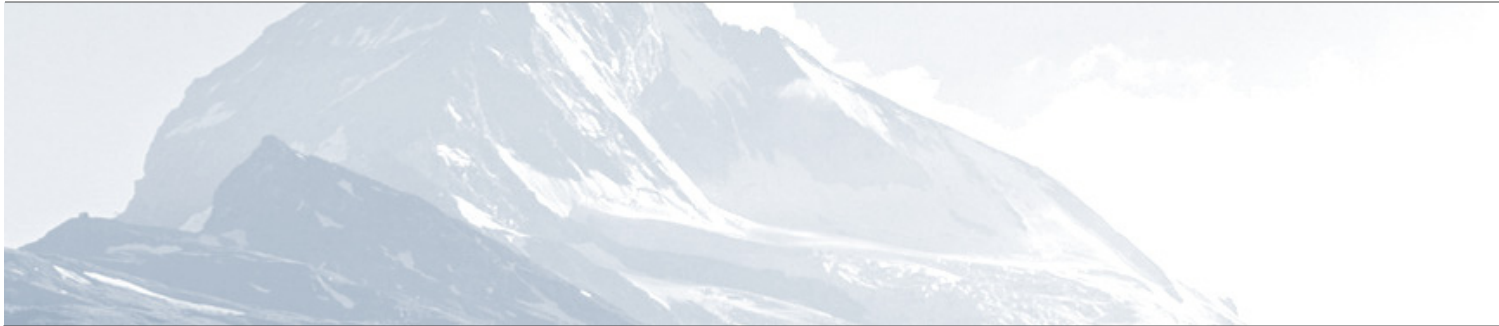
# Market Report Structured Products

## Monthly report

April 2010

### Swiss Structured Products Association SSPA

---



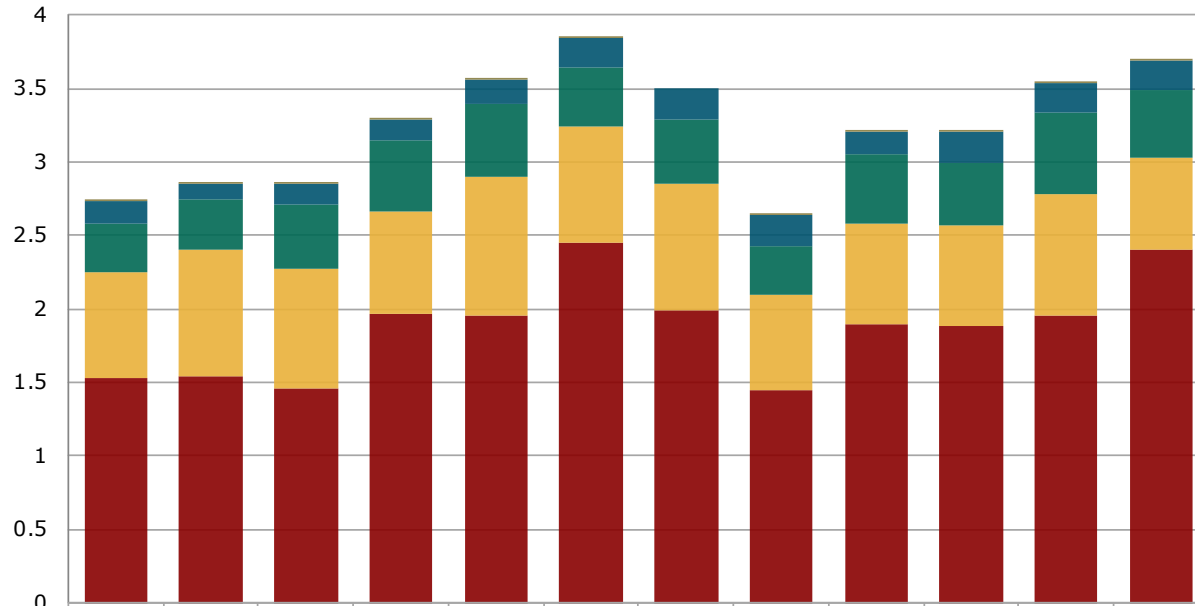
## Contents

<b>1. Structured products at the Scoach exchange</b>	
1.1 Turnover in the last 12 months.....	3
1.2 Number of listed products in the last 12 months.....	4
1.3 New issues in the last 12 months.....	5
1.4 Market shares of the five largest issuers.....	6
<b>2. Securities held in banks' client deposits</b>	
2.1 Structured products since 2005.....	7
<b>3. Appendix</b>	
3.1 Abbreviations.....	8
3.2 Issued by.....	8
3.3 Data sources.....	8
3.4 Disclaimer.....	8

# 1. Structured products at the Scoach exchange

## 1.1 Turnover in the last 12 months

Figures in CHF bn

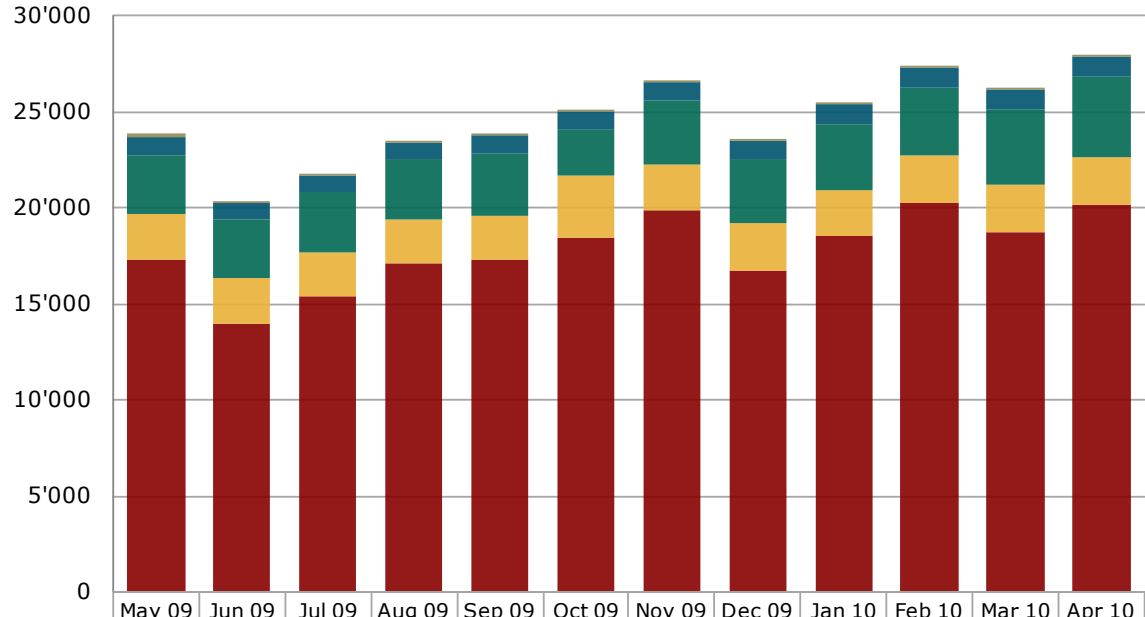


	May 09	Jun 09	Jul 09	Aug 09	Sep 09	Oct 09	Nov 09	Dec 09	Jan 10	Feb 10	Mar 10	Apr 10
■ Various	0.00	0.00	0.00	0.00	0.00	0.00	0.00	0.01	0.01	0.00	0.00	0.00
■ Capital Protection	0.16	0.11	0.15	0.14	0.16	0.19	0.21	0.21	0.16	0.21	0.20	0.19
■ Yield Enhancement	0.33	0.34	0.44	0.48	0.49	0.41	0.44	0.34	0.47	0.42	0.55	0.46
■ Participation	0.72	0.86	0.82	0.69	0.94	0.79	0.86	0.65	0.68	0.69	0.82	0.63
■ Leverage	1.53	1.54	1.45	1.97	1.95	2.44	1.99	1.45	1.90	1.88	1.96	2.40

Source: SIX Swiss Exchange, Derivative Partners Research AG

# 1. Structured products at the Scoach exchange

## 1.2 Number of listed products in the last 12 months

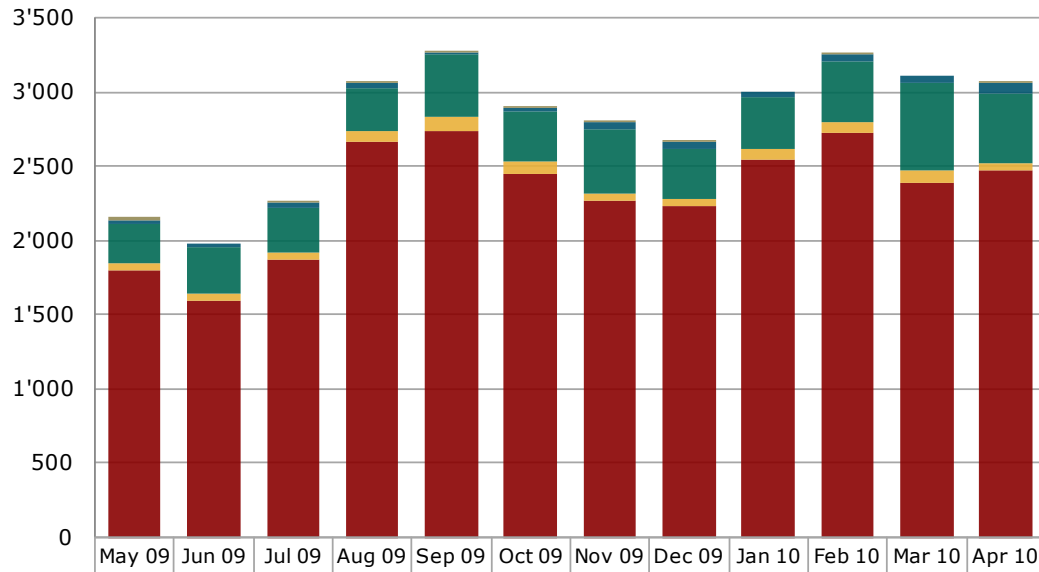


	May 09	Jun 09	Jul 09	Aug 09	Sep 09	Oct 09	Nov 09	Dec 09	Jan 10	Feb 10	Mar 10	Apr 10
■ Various	259	49	36	28	13	16	16	16	29	28	29	27
■ Capital Protection	922	915	919	928	912	927	964	996	984	1'008	1'036	1'095
■ Yield Enhancement	3'059	3'055	3'085	3'100	3'191	2'371	3'361	3'347	3'433	3'577	3'934	4'172
■ Participation	2'357	2'311	2'281	2'290	2'332	3'249	2'403	2'414	2'403	2'451	2'493	2'521
■ Leverage	17'310	13'991	15'413	17'100	17'297	18'445	19'831	16'751	18'542	20'232	18'683	20'121

Source: SIX Swiss Exchange, Derivative Partners Research AG

# 1. Structured products at the Scoach exchange

## 1.3 New issues in the last 12 months



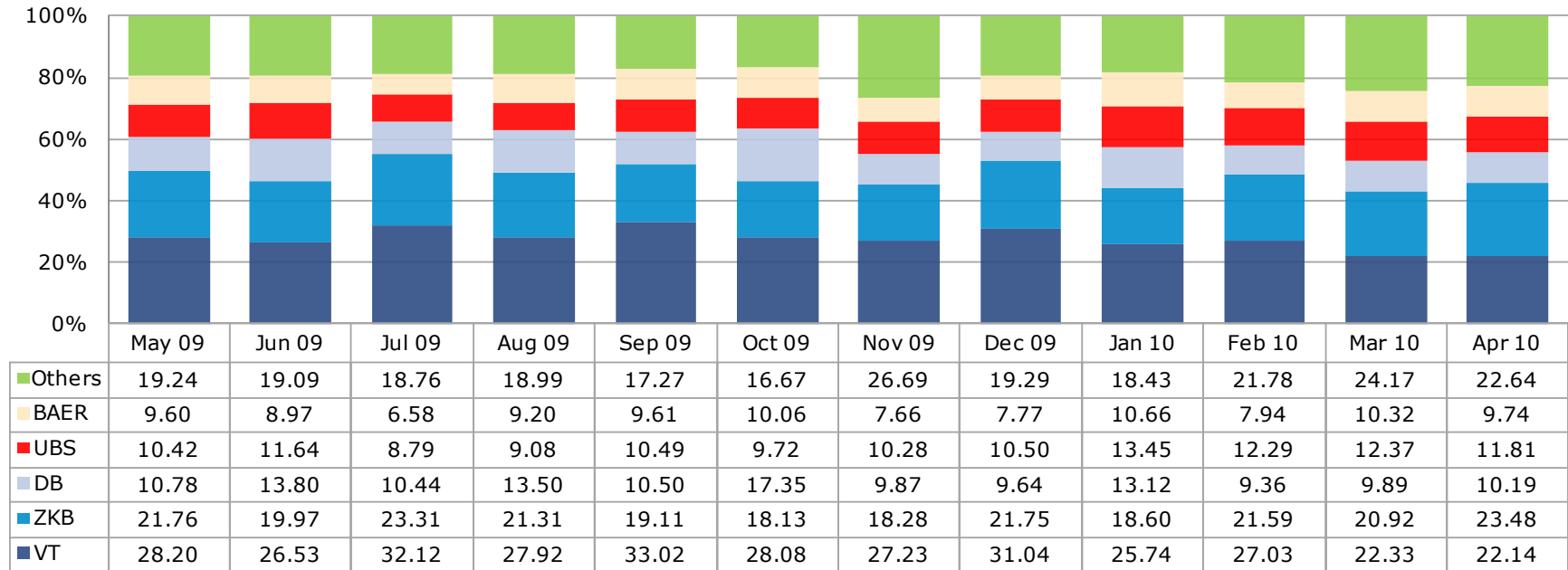
	May 09	Jun 09	Jul 09	Aug 09	Sep 09	Oct 09	Nov 09	Dec 09	Jan 10	Feb 10	Mar 10	Apr 10
Various	27	0	2	5	3	3	1	3	0	13	0	3
Capital Protection	21	17	36	34	19	29	49	45	35	51	52	71
Yield Enhancement	275	318	306	293	412	336	435	338	347	408	587	469
Participation	38	51	44	76	95	82	49	49	70	68	90	46
Leverage	1'804	1'589	1'873	2'661	2'743	2'452	2'263	2'232	2'550	2'728	2'385	2'478

Source: SIX Swiss Exchange, Derivative Partners Research AG

# 1. Structured products at the Scoach exchange

## 1.4 Market shares (turnover) of the five largest issuers

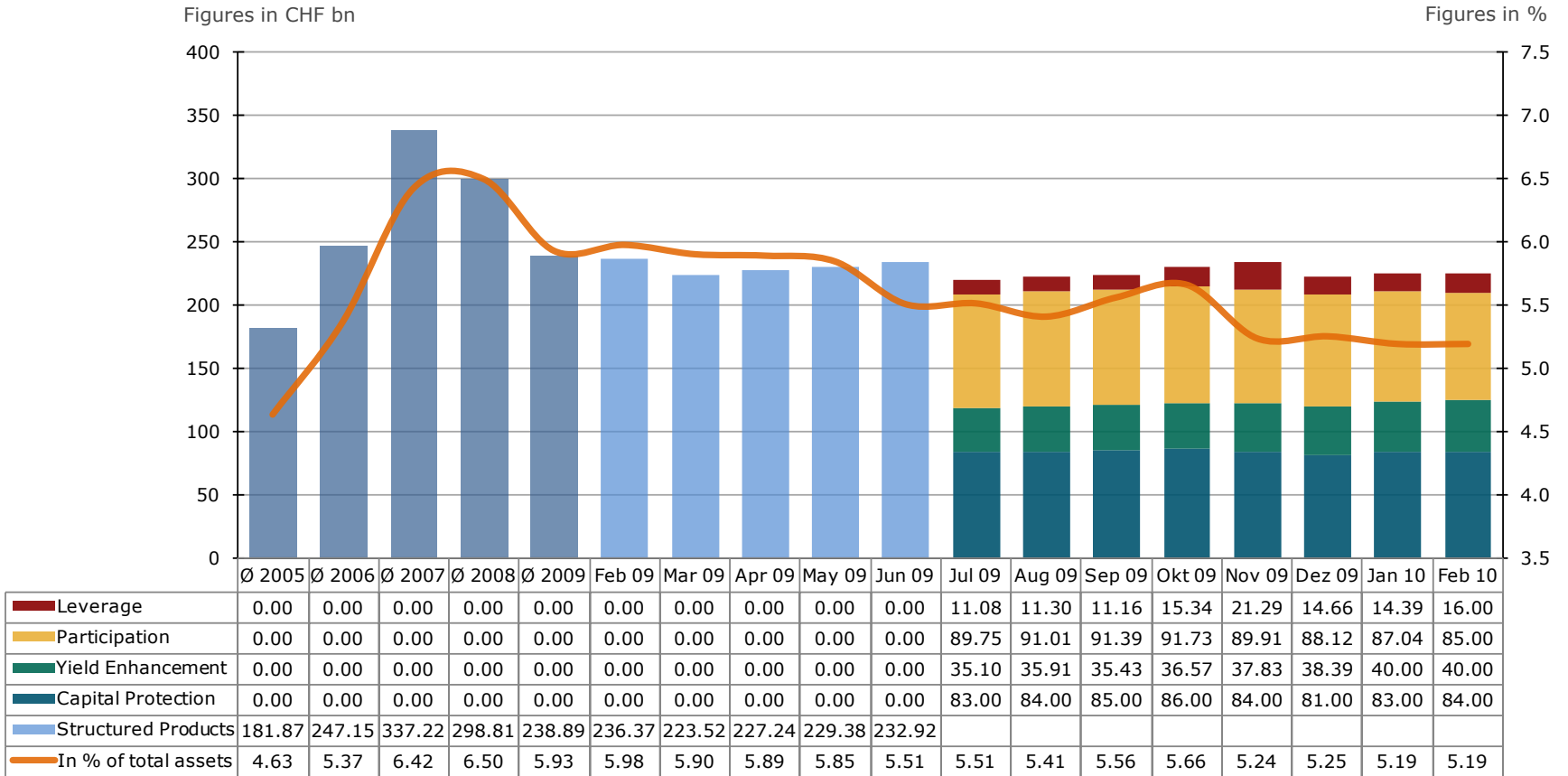
Figures in %



Source: SIX Swiss Exchange, Derivative Partners Research AG

## 2. Securities held in bank's client deposits

### 2.1 Structured products since 2005



Source: SNB Monthly Statistical Bulletin, latest available figures

## 3. Appendix

### 3.1 Abbreviations

Leverage Products.....	Leverage
Capital ProtectionProducts.....	Capital Protection
Participation Products.....	Participation
Yield Enhancement Products.....	Yield Enhancement
Other Products.....	Various
Billion.....	bn

### 3.2 Issued by

#### Swiss Structured Products Association SSPA

Splügenstrasse 10, CH-8002 Zurich, Switzerland  
 www.sspa-association.ch  
 Contact: peter.keller@svsp-verband.ch  
 Published monthly and quarterly in more detail

### 3.3 Data sources

Swiss National Bank: Monthly Statistical Bulletin  
 SIX Swiss Exchange  
 Derivative Partners Research AG  
 In-house surveys

Key date is 30<sup>th</sup> April 2010

### 3.4 Disclaimer

We cannot guarantee the accuracy of this document, see <http://www.svsp-verband.ch/home/disclaimer.aspx?lang=en>.  
 We hereby authorize reprints of and quotes with attributions from this document.