

Market Report Structured Products

Monthly report

November 2012

Swiss Structured Products Association SSPA



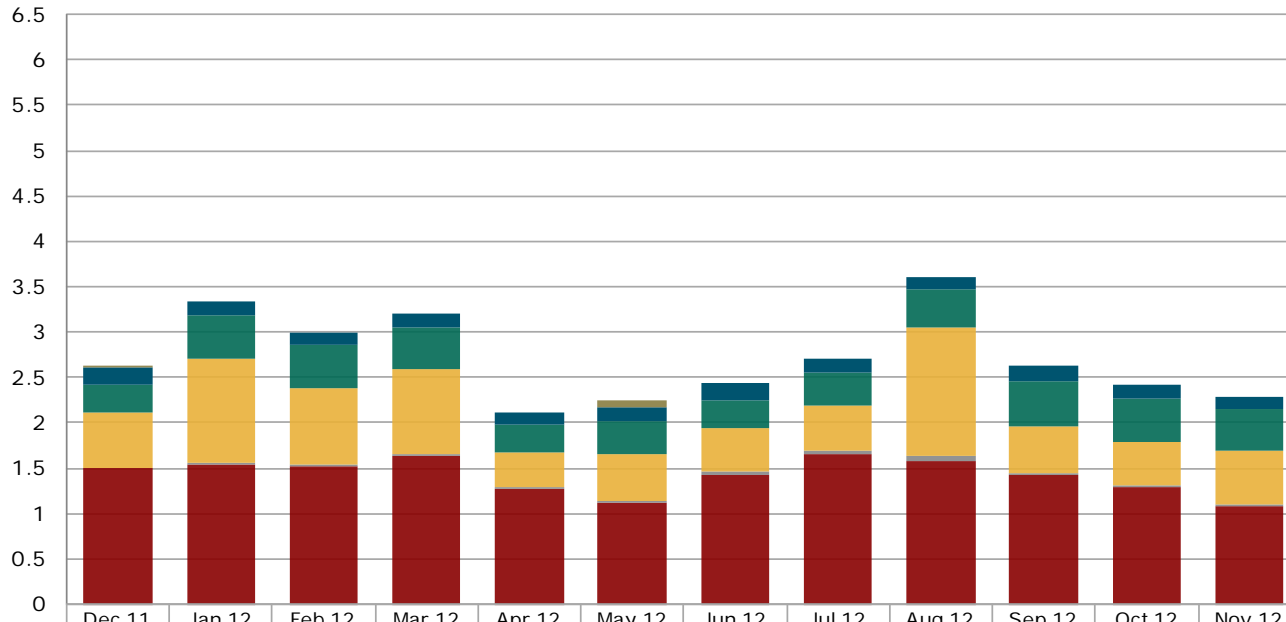
Contents

1. Structured products at the Scoach exchange	
1.1 Turnover in the last 12 months.....	3
1.2 Number of listed products in the last 12 months.....	4
1.3 New issues in the last 12 months.....	5
1.4 Market shares of the five largest issuers.....	6
2. Securities held in banks' client deposits	
2.1 Structured products since 2006.....	7
3. Appendix	
3.1 Abbreviations.....	8
3.2 Issued by.....	8
3.3 Data sources.....	8
3.4 Disclaimer.....	8

1. Structured products at the Scoach exchange

1.1 Turnover in the last 12 months

Figures in CHF bn

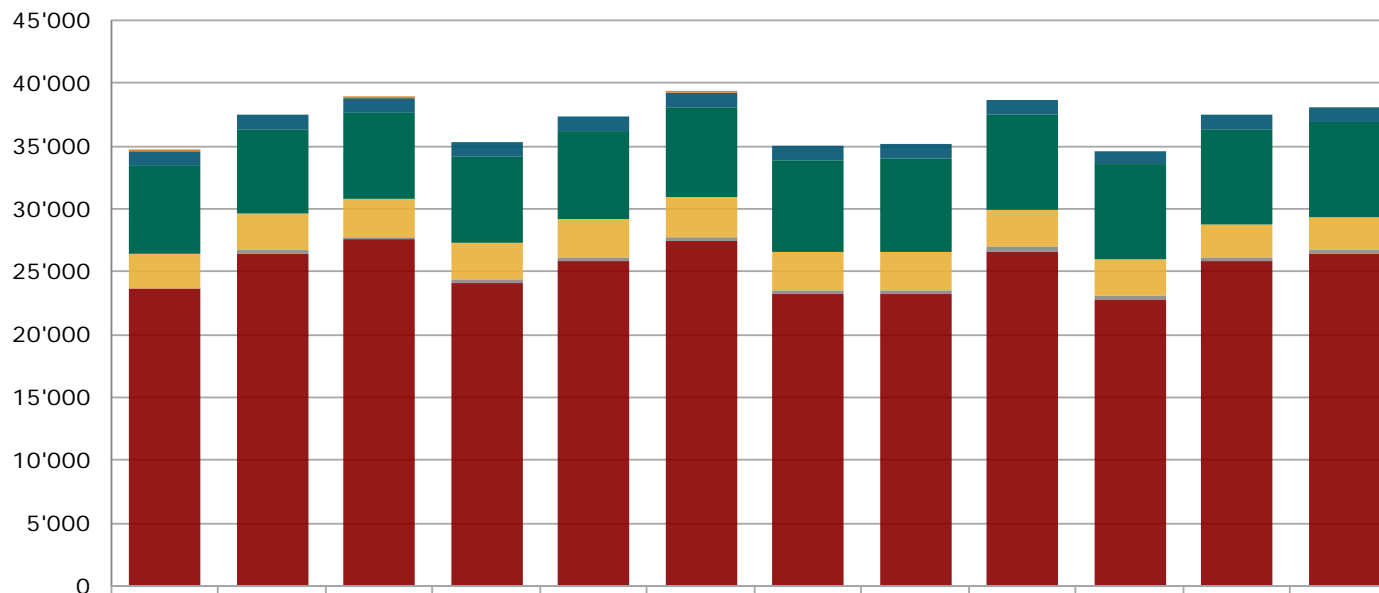


	Dec 11	Jan 12	Feb 12	Mar 12	Apr 12	May 12	Jun 12	Jul 12	Aug 12	Sep 12	Oct 12	Nov 12
Various	0.00	0.00	0.00	0.00	0.00	0.08	0.00	0.00	0.00	0.00	0.00	0.00
Capital Protection	0.18	0.16	0.15	0.16	0.13	0.17	0.20	0.15	0.14	0.17	0.15	0.14
Yield Enhancement	0.31	0.47	0.46	0.46	0.32	0.35	0.31	0.37	0.42	0.50	0.48	0.45
Participation	0.62	1.15	0.85	0.94	0.38	0.51	0.47	0.50	1.41	0.51	0.47	0.59
With Reference Entities		0.02	0.02	0.02	0.02	0.03	0.04	0.04	0.07	0.03	0.02	0.02
Leverage	1.50	1.55	1.52	1.63	1.27	1.12	1.42	1.65	1.57	1.43	1.30	1.09

Source: SIX Swiss Exchange, Derivative Partners Research AG

1. Structured products at the Scoach exchange

1.2 Number of listed products in the last 12 months

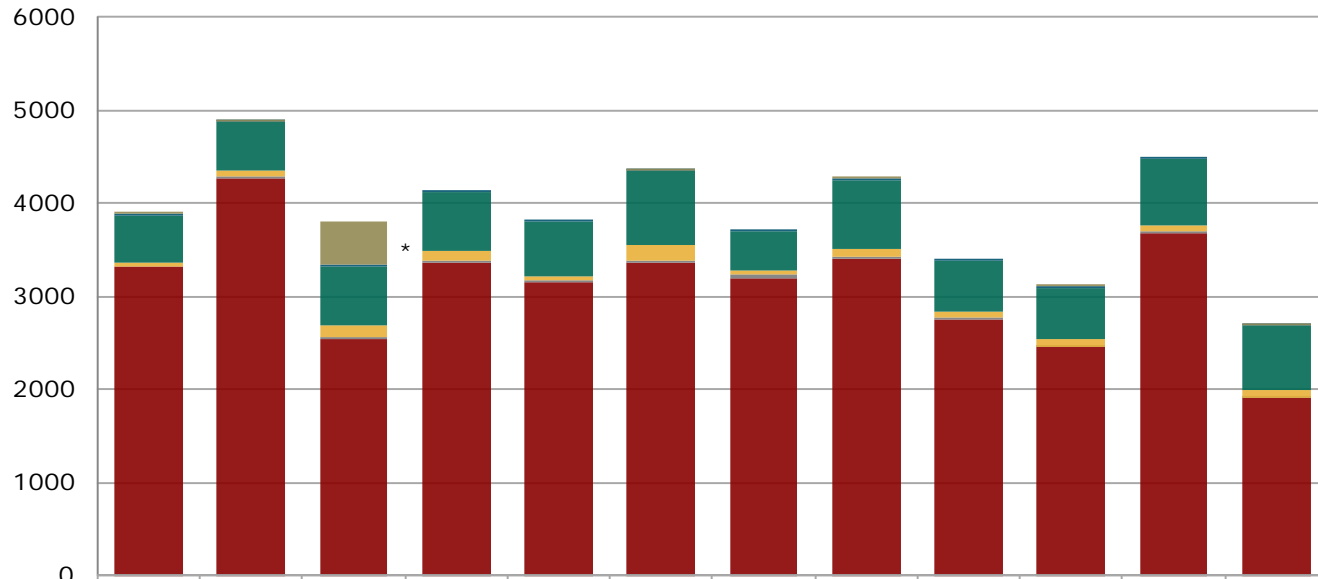


	Dec 11	Jan 12	Feb 12	Mar 12	Apr 12	May 12	Jun 12	Jul 12	Aug 12	Sep 12	Oct 12	Nov 12
■ Various	16	0	1	0	0	2	0	0	0	0	0	0
■ Capital Protection	1'169	1'143	1'150	1'157	1'167	1'154	1'151	1'122	1'164	1'145	1'136	1'113
■ Yield Enhancement	7'055	6'686	6'767	6'831	6'907	7'248	7'236	7'485	7'555	7'469	7'503	7'527
■ Participation	2'750	2'972	3'019	3'040	3'056	3'108	3'044	3'033	2'951	2'901	2'653	2'663
■ With Reference Entities		206	235	278	286	309	340	332	351	341	358	351
■ Leverage	23'647	26'464	27'592	24'076	25'929	27'481	23'222	23'182	26'665	22'824	25'813	26'381

Source: SIX Swiss Exchange, Derivative Partners Research AG

1. Structured products at the Scoach exchange

1.3 New issues in the last 12 months



	Dec 11	Jan 12	Feb 12	Mar 12	Apr 12	May 12	Jun 12	Jul 12	Aug 12	Sep 12	Oct 12	Nov 12
■ Various	3	18	464	0	0	2	0	7	0	1	0	1
■ Capital Protection	16	19	21	29	28	11	17	24	27	11	14	8
■ Yield Enhancement	507	512	627	627	577	785	428	739	552	564	714	687
■ Participation	50	72	114	102	55	164	48	84	60	65	63	84
■ With Reference Entities		21	31	31	15	28	31	14	10	19	19	7
■ Leverage	3'311	4'263	2537	3350	3150	3363	3194	3404	2759	2446	3679	1909

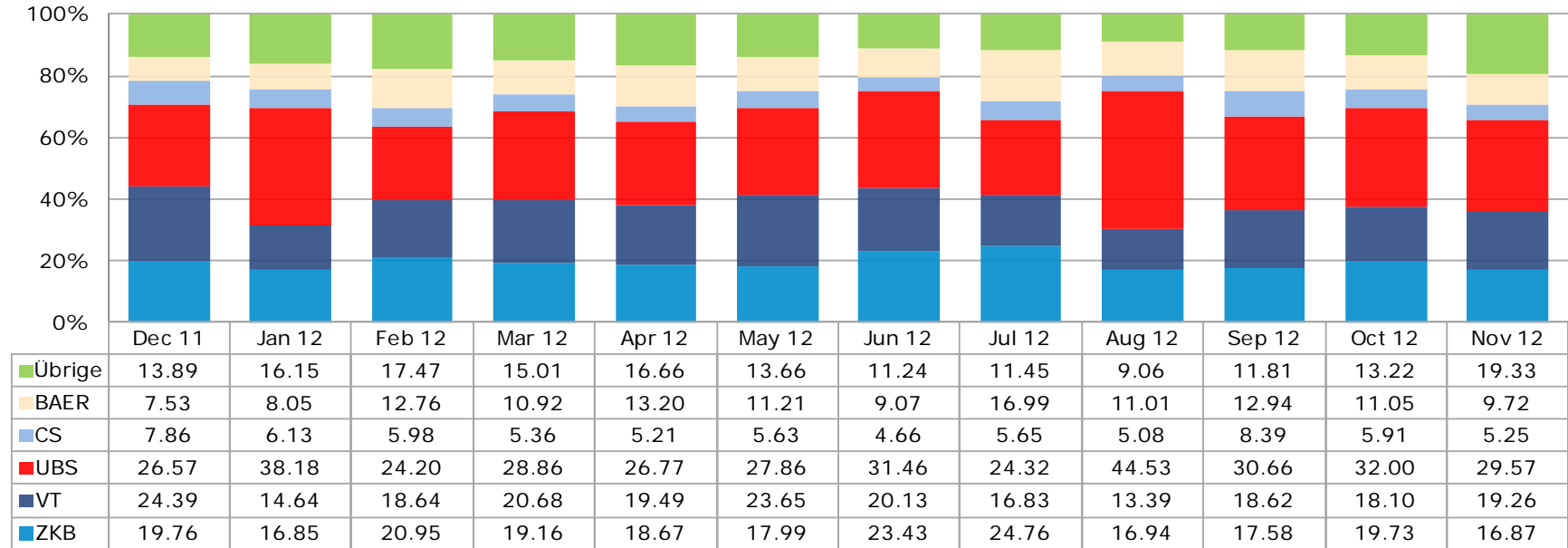
* One day listed: 400 products by UBS

Source: SIX Swiss Exchange, Derivative Partners Research AG

1. Structured products at the Scoach exchange

1.4 Market shares (turnover) of the five largest issuers

Figures in %



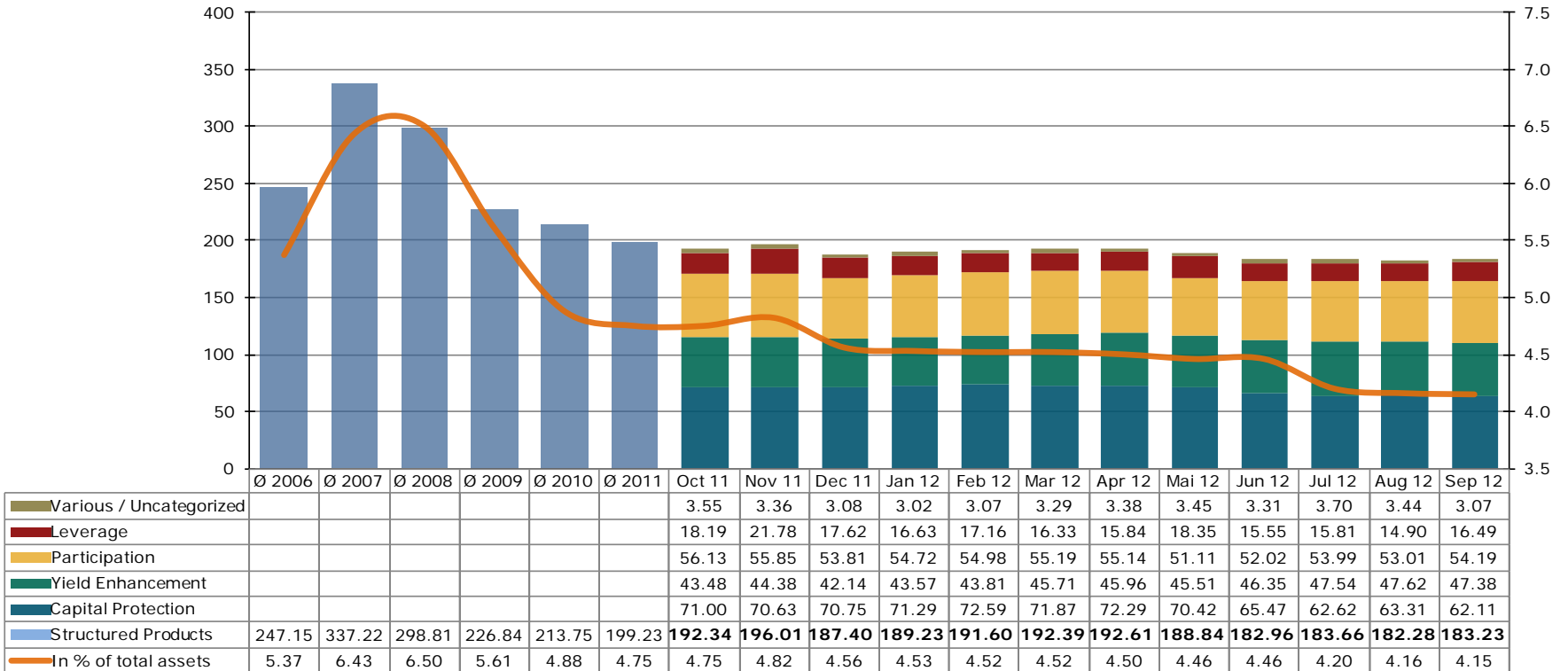
Source: SIX Swiss Exchange, Derivative Partners Research AG

2. Securities held in bank's client deposits

2.1 Structured products since 2006

Figures in CHF bn

Figures in %



Source: SNB Monthly Statistical Bulletin, latest available figures

3. Appendix

3.1 Abbreviations

Leverage Products.....	Leverage
Investment Products with Reference Entities.....	With Reference Entities
Participation Products.....	Participation
Capital Protection Products.....	Capital Protection
Yield Enhancement Products.....	Yield Enhancement
Other Products.....	Various
Billion.....	bn

3.2 Issued by

Swiss Structured Products Association SSPA

Splügenstrasse 10, CH-8002 Zurich, Switzerland

www.sspa-association.ch

Contact: peter.keller@svsp-verband.ch

Published monthly and quarterly in more detail

3.3 Data sources

Swiss National Bank: Monthly Statistical Bulletin

SIX Swiss Exchange

Derivative Partners Research AG

In-house surveys

Key date is 30th November 2012

3.4 Disclaimer

We cannot guarantee the accuracy of this document, see <http://www.svsp-verband.ch/home/disclaimer.aspx?lang=en>.

We hereby authorize reprints of and quotes with attributions from this document.